

(001P)

## Picture of some Japanese Tubes

These Tubes shown here are samples of Early Japanese tubes displayed in the UEC Museum of Communications in Tokyo:



**UN-100 (Spherical Audion) by TEC**  
1917



**UF-101 (French TM type) by TEC**  
1919



**UV-102 (Navy type) by TEC**  
1920



**AAB-5 by Annaka**  
c. 1920



**C4C** by JRC (1924)



**C7** by JRC (1924)



**UM-103 (V.24 type)** by TEC (1927)



**TV8** by Tokyo Radio



**S1** by JRC



**258** by Annaka



**BK20** by JRC



**US-6B8** by Toshiba (1939)



**US-6C5** by Toshiba (1938)



**US-6F6** by Toshiba (1938)



**US-6F7A** by Toshiba (1939)



**KS-6H6** by Toshiba (1938)



**US-6J5** by Toshiba (1940)



**US-6J7** by Toshiba (1938)



**US-6K7** by Toshiba (1938)





**US-6L7** by Toshiba (1938)



**US-6Q7** by Toshiba (1939)



**US-6V6** by Toshiba (1939)



**US-6305** by Toshiba (1940)



**UL-6306** by Toshiba (1943)



**RH-2** by Toshiba (1942)



**RH-4** by Toshiba (1942)



**RH-8** by Toshiba (1942)



**DH-2** by Toshiba (1942)



**PH-1** by Toshiba (1942)



**KH-2** by Toshiba (1942)



**Sola (Sky)** by Toshiba (1944)



**Umi (Sea)** by Shinagawa  
Production Date: Jan., '45



**D-11** by Shinagawa



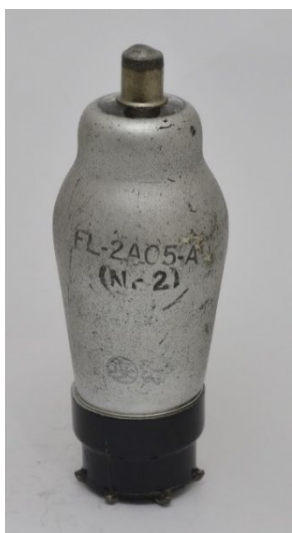
**2400** by Toshiba



**RE-3** by JRC



**RC-4** by Toshiba



**FL-2A05A** by JRC



**FM-2A05A** by JRC



**ME-664A** by Shinagawa



**UN-30M** by Toshiba (1933)



**UZ-30MC** by Toshiba (1934)



**UZ-12C** by Riken



**MC-804-A** by NEC



**MB-850** by NEC

Photos taken by A. Yamakata